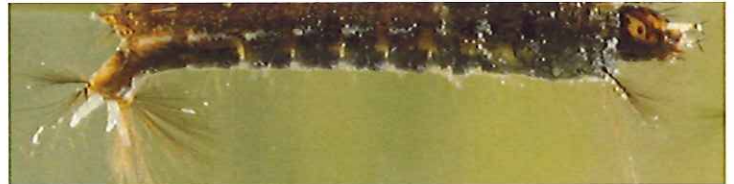


APCo Vector Control

Mosquitoes

must have water in which to breed. Many species not associated with the reservoir account for most mosquito complaints. Follow these simple steps to reduce mosquito breeding sites in your yard.

- ▶ Properly dispose of all containers on your property that can hold water. Old cans, buckets, flower pots and unused pet bowls can produce thousands of mosquitoes during the year.
- ▶ Clean bird baths weekly.
- ▶ Dispose of old tires in accordance with local regulations.
- ▶ Keep boats properly covered or drained.



- ▶ Properly maintain swimming pools, turn over wading pools not in use.
- ▶ Eliminate standing water in ditches, tree holes and puddles.
- ▶ Clean clogged gutters and insure proper drainage.
- ▶ Keep wheel barrows turned over when not in use.
- ▶ Change water in animal bowls and watering troughs weekly.
- ▶ Share this information with your neighbors.



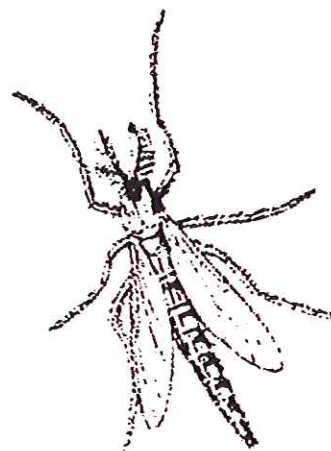
If you have any questions about these mosquito control efforts, please contact us at: [1.800.LAKES.11](tel:1800.LAKES.11) or [1.800.525.3711](tel:1800.525.3711)

Midges

Background

Midges are often confused with mosquitoes. Unlike mosquitoes, midges do not bite, suck blood or carry disease. They are very common and abundant in natural and man made waters.

Midges are an important part of the ecology in lakes. Since many fish eat midge larvae, lakes where midges are found are often excellent fishing lakes.



Problem

Midges can hatch in large numbers between April and November. The adult midge lives from 3 to 5 days.

Midges are attracted to lighted areas around homes and businesses during the evening hours. During this time midges can pose a nuisance, especially near breeding sites. Often people have to cease outdoor activities when adult midges seek shaded areas along the shoreline and near residences to rest.

Recommendations

Chemical and mechanical control measures aimed at the adult midge are only effective for short periods of time. Due to the development of resistance in insects to pesticides and with a concern for water quality, control of midge larvae is considered impractical.

- ◀ Residents may use adulticide sprays for temporary control of midges. Spraying must be repeated as more adult midges emerge.
- ◀ Residents should minimize outside lighting during the evening hours since adult midges are attracted to lights.